

# Arctic Sea Ice Reaches Minimum Extent for 2009, Third Lowest Ever Recorded

*This image compares differences in ice-covered areas between September 12, 2009, the date of this year's minimum, and September 16, 2007, the record low minimum extent. Light gray shading indicates the region where ice occurred in both 2007 and 2009, while white and dark gray areas show ice cover unique to 2009 and to 2007, respectively. (Credit: Sea Ice Index data/National Snow and Ice Data Center)*

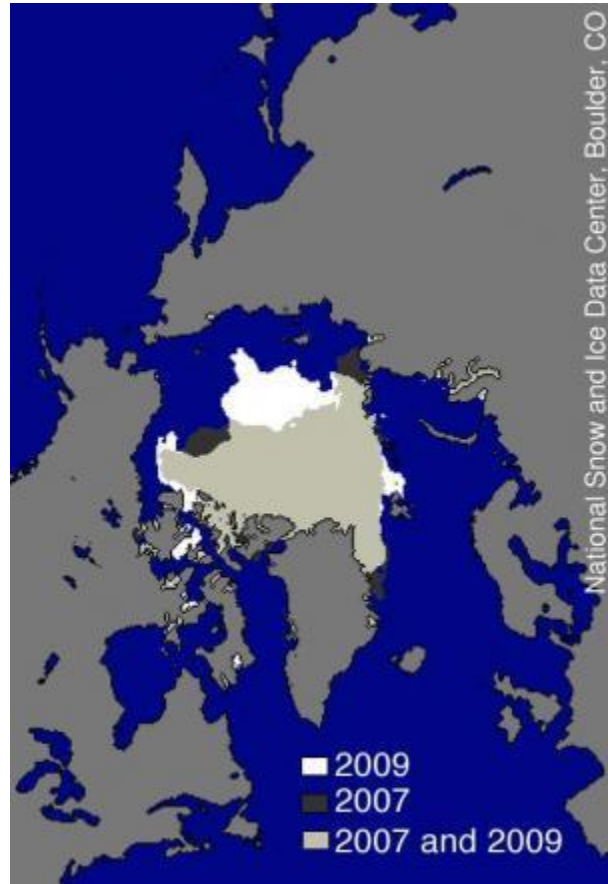
ScienceDaily (Sep. 18, 2009) — The Arctic sea ice cover appears to have reached its minimum extent for the year, the third-lowest recorded since satellites began measuring sea ice extent in 1979, according to the University of Colorado at Boulder's National Snow and Ice Data Center.

While this year's September minimum extent was greater than each of the past two record-setting and near-record-setting low years, it is still significantly below the long-term average and well outside the range of natural climate variability, said NSIDC Research Scientist Walt Meier. Most scientists believe the shrinking Arctic sea ice is tied to warming temperatures caused by an increase in human-produced greenhouse gases being pumped into Earth's atmosphere.

Atmospheric circulation patterns helped the Arctic sea ice spread out in August to prevent another record-setting minimum, said Meier. But most of the 2009 September Arctic sea ice is thin first- or second-year ice, rather than thicker, multi-year ice that used to dominate the region, said Meier.

The minimum 2009 sea-ice extent is still about 620,000 square miles below the average minimum extent measured between 1979 and 2000 -- an area nearly equal to the size of Alaska, said Meier. "We are still seeing a downward trend that appears to be heading toward ice-free Arctic summers," Meier said.

CU-Boulder's NSIDC will provide more detailed information in early October with a full analysis of the 2009 Arctic ice conditions, including aspects of the melt season and conditions



heading into the winter ice-growth season. The report will include graphics comparing 2009 to the long-term Arctic sea-ice record.

NSIDC is part of CU-Boulder's Cooperative Institute for Research in Environmental Sciences and is funded primarily by NASA.

---

*Adapted from materials provided by [University of Colorado at Boulder](#).*

Email or share this story:

| [More](#)

Need to cite this story in your essay, paper, or report? Use one of the following formats:



APA



MLA

University of Colorado at Boulder (2009, September 18). Arctic Sea Ice Reaches Minimum Extent For 2009, Third Lowest Ever Recorded. *ScienceDaily*. Retrieved October 10, 2009, from <http://www.sciencedaily.com/releases/2009/09/090917144131.htm>